

# DATASHEET

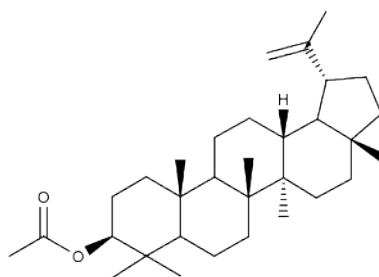


www.extrasynthese.com

## Lupeol acetate

**REF 0024**

<u>Chemical family</u>	TRITERPENE / Lupane
<u>CAS Number</u>	1617-68-1
<u>Empirical formula</u>	C <sub>32</sub> H <sub>52</sub> O <sub>2</sub>
<u>Molecular weight</u>	468,77



<u>Long term storage</u>	Store at <+8°C Store in dry and dark place.
<u>Shipment conditions</u>	Ambient temperature

Appearance	White to beige coloured Powder
Melting point/freezing point	211-218°C
[α] <sub>D</sub>	+(38 ± 3)° c=1 in methylene chloride
Purity (HPLC)	≥95%