

DATASHEET

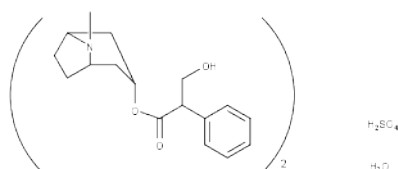


www.extrasynthese.com

Atropine sulfate

REF 0615

<u>Chemical family</u>	ALKALOID / Tropane
<u>CAS Number</u>	5908-99-6
<u>Empirical formula</u>	$(C_{17}H_{23}NO_3)_2 \cdot H_2SO_4 \cdot H_2O$
<u>Molecular weight</u>	694,84



Classification



Acute oral toxicity (Category 2) (H300) ; Acute inhalation toxicity (Category 2) (H330)

Long term storage

Store at <+8°C

Store in dry and dark place.

Shipment conditions

Ambient temperature

Appearance

White to beige coloured Powder

Purity (HPLC)

≥95%