

DATASHEET



www.extrasynthese.com

Corynanthine

REF 0626

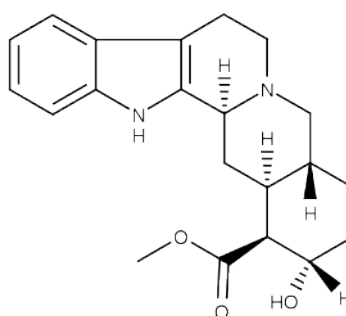
Chemical family ALKALOID / Indole

Synonym Rauhimbine

CAS Number 483-10-3

Empirical formula $C_{21}H_{26}N_2O_3$

Molecular weight 354,45



Classification



Acute oral toxicity (Category 3) (H301)

Long term storage

Store at $<+8^{\circ}\text{C}$

Store in dry and dark place.

Shipment conditions

Ambient temperature

Appearance

Beige-coloured Powder

Purity (HPLC)

$\geq 90\%$