

# DATASHEET

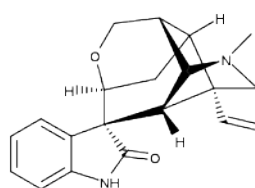


www.extrasynthese.com

## Gelsemine hydrochloride

**REF 0636**

<u>Chemical family</u>	ALKALOID / Indole
<u>CAS Number</u>	35306-33-3
<u>Empirical formula</u>	C <sub>20</sub> H <sub>22</sub> N <sub>2</sub> O <sub>2</sub> ,HCl
<u>Molecular weight</u>	358,87



HCl

### Classification



Acute oral toxicity (Category 3) (H301) ; Acute inhalation toxicity (Category 3) (H331)

### Long term storage

Store at <+8°C

Store in dry and dark place.

### Shipment conditions

Ambient temperature

### Appearance

White to beige coloured Powder

N Content

(7.9 ± 0.5)%

Cl Content

(9.9 ± 0.5)%

Purity (HPLC)

≥95%