

DATASHEET

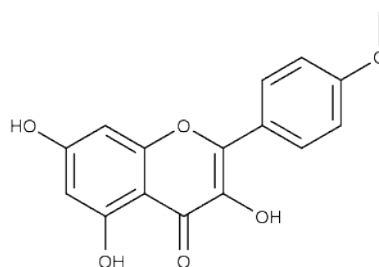


www.extrasynthese.com

Kaempferide

REF 1123 S

| | |
|--------------------------|--|
| <u>Chemical family</u> | FLAVONOID / Flavonol |
| <u>Synonym</u> | Kaempferol-4'-methylether ; 3,5,7-Trihydroxy-4'-methoxyflavone |
| <u>CAS Number</u> | 491-54-3 |
| <u>Empirical formula</u> | C ₁₆ H ₁₂ O ₆ |
| <u>Molecular weight</u> | 300,28 |



| | |
|----------------------------|--|
| <u>Long term storage</u> | Store at <+8°C Store in dry and dark place. |
| <u>Shipment conditions</u> | Ambient temperature |

| | |
|--|---------------|
| <u>Appearance</u> | Yellow Powder |
| <u>Purity (HPLC)</u> This product is available with HPLC chromatogram | ≥99% |