

DATASHEET

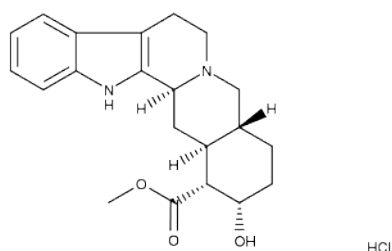


www.extrasynthese.com

Yohimbine hydrochloride

REF 1542

<u>Chemical family</u>	ALKALOID / Indole
<u>CAS Number</u>	65-19-0
<u>Empirical formula</u>	$C_{21}H_{26}N_2O_3, HCl$
<u>Molecular weight</u>	390,91



Classification



Acute oral toxicity (Category 2) (H300) ; Acute dermal toxicity (Category 3) (H311) ; Acute inhalation toxicity (Category 3) (H331)

Long term storage

Store at $<+8^{\circ}C$

Store in dry and dark place.

Shipment conditions

Ambient temperature

Appearance

White to beige coloured Powder

Purity (HPLC)

$\geq 90\%$