

DATASHEET

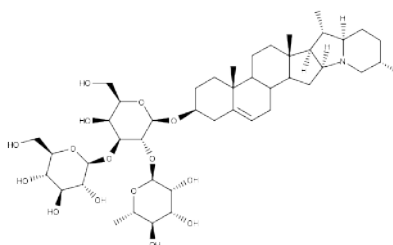


www.extrasynthese.com

alpha-Solanine

REF 1652 S

<u>Chemical family</u>	PHYTOSTEROID / Glycoalkaloid
<u>Synonym</u>	Solatunine
<u>CAS Number</u>	20562-02-1
<u>Empirical formula</u>	C ₄₅ H ₇₃ NO ₁₅
<u>Molecular weight</u>	868,08



Classification



Acute oral toxicity (Category 4) (H302)

Long term storage

Store at <+8°C

Store in dry and dark place.

Shipment conditions

Ambient temperature

Appearance

White to beige coloured Powder

Purity (HPLC)

≥98%

This product is available with HPLC chromatogram