

# DATASHEET

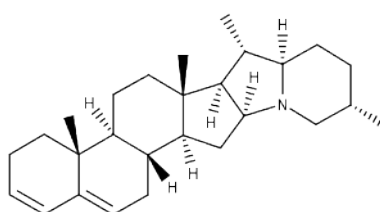


www.extrasynthese.com

## Solanthrene

**REF 1654 S**

<u>Chemical family</u>	PHYTOSTEROID / Glycoalkaloid
<u>Synonym</u>	Solanidiene
<u>CAS Number</u>	26516-51-8
<u>Empirical formula</u>	C <sub>27</sub> H <sub>41</sub> N
<u>Molecular weight</u>	379,63



## Classification



Acute oral toxicity (Category 4) (H302) ; Reproductive Toxicity (Category 2) (H361)

## Long term storage

Store at <-15°C

Store in dry and dark place.

## Shipment conditions

Ambient temperature

## Appearance

White to beige coloured Powder

## Purity (HPLC)

≥95%

This product is available with HPLC chromatogram