

# DATASHEET

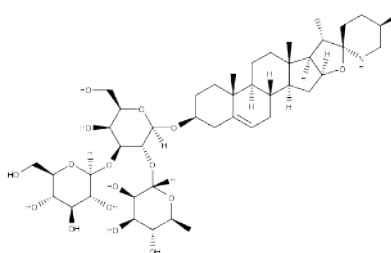


www.extrasynthese.com

alpha-Solasonine

**REF 1658 S**

<u>Chemical family</u>	PHYTOSTEROID / Glycoalkaloid
<u>CAS Number</u>	19121-58-5
<u>Empirical formula</u>	C <sub>45</sub> H <sub>73</sub> NO <sub>16</sub>
<u>Molecular weight</u>	884,08



Classification



Acute oral toxicity (Category 4) (H302)

Long term storage

Store at <+8°C

Store in dry and dark place.

Shipment conditions

Ambient temperature

Appearance

White to beige coloured Powder

Purity (HPLC)

≥98%

This product is available with HPLC chromatogram