

DATASHEET



www.extrasynthese.com

beta-Boswellic acid

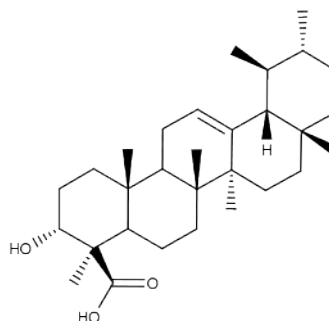
REF 2316 S

Chemical family TRITERPENE / Boswellic

CAS Number 631-69-6

Empirical formula C₃₀H₄₈O₃

Molecular weight 456,71



Long term storage

Store at <+8°C

Store in dry and dark place.

Shipment conditions

Ambient temperature

Appearance

White to beige coloured Powder

Purity (HPLC)

≥97%

This product is available with HPLC chromatogram