

# DATASHEET

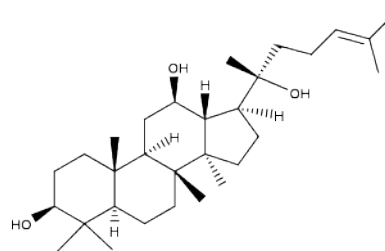


www.extrasynthese.com

(20R)-Protopanaxadiol

**REF 2324**

<u>Chemical family</u>	TRITERPENE / Ginsenoside
<u>CAS Number</u>	7755-01-3
<u>Empirical formula</u>	C <sub>30</sub> H <sub>52</sub> O <sub>3</sub>
<u>Molecular weight</u>	460,74



<u>Long term storage</u>	Store at <-15°C Store in dry and dark place.
<u>Shipment conditions</u>	Ambient temperature

Appearance	White to beige coloured Powder
Purity (HPLC)	≥95%