

DATASHEET



www.extrasynthese.com

Glucosylceramides from wheat

REF 2900

Chemical family

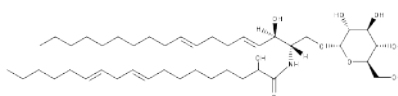
LIPID / Glycolipid

Synonym

Glucocerebrosides from wheat

CAS Number

85305-87-9



Long term storage

Store at <+8°C

Store in dry and dark place.

Shipment conditions

Ambient temperature

Appearance

White to beige coloured Powder

Purity (HPLC)

≥95% (mixture of glucosylceramides)

This product is available with HPLC chromatogram