

DATASHEET

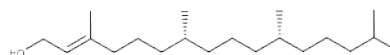


www.extrasynthese.com

trans-Phytol

REF 3724 S

<u>Chemical family</u>	DITERPENE
<u>Synonym</u>	(E)-Phytol ; 3,7,11,15-Tetramethyl-2-(E)-hexadecen-1-ol
<u>CAS Number</u>	150-86-7
<u>Empirical formula</u>	C ₂₀ H ₄₀ O
<u>Molecular weight</u>	296,54



Classification



Hazardous to the aquatic environment (Category 1) (H400) ; Hazardous to the aquatic environment (Category 1) (H410) ; Skin Irritation (Category 2) (H315)

Long term storage

Store at <+8°C

Store in dry and dark place.

Shipment conditions

Ambient temperature

Appearance

Colorless to light yellow Liquid

Purity (GC)

≥98%

This product is available with GC chromatogram