

DATASHEET

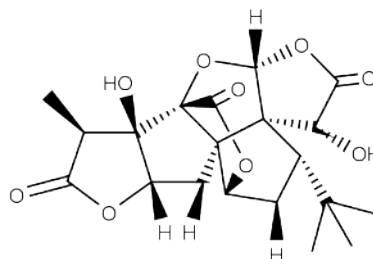


www.extrasynthese.com

Ginkgolide A

REF 3728 S

<u>Chemical family</u>	DITERPENE / Ginkgolide
<u>Synonym</u>	1,7-Dideoxyginkgolide C
<u>CAS Number</u>	15291-75-5
<u>Empirical formula</u>	C ₂₀ H ₂₄ O ₉
<u>Molecular weight</u>	408,41



Classification



Skin Irritation (Category 2) (H315) ; Eye Irritation (Category 2) (H319)

Long term storage

Store at <+8°C

Store in dry and dark place.

Shipment conditions

Ambient temperature

Appearance

White to beige coloured Powder

Purity (HPLC)

≥98%

This product is available with HPLC chromatogram