

DATASHEET



www.extrasynthese.com

Lactucopicrin

REF 3813

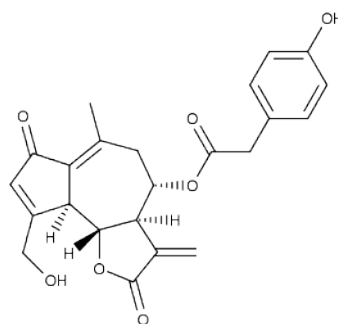
Chemical family SESQUITERPENE

Synonym Lactupicrin ; Intybin

CAS Number 65725-11-3

Empirical formula $C_{23}H_{22}O_7$

Molecular weight 410,43



Long term storage Store at $<+8^{\circ}C$

Store in dry and dark place.

Shipment conditions Ambient temperature

Appearance White to beige coloured Powder

Purity (HPLC) $\geq 90\%$