

# DATASHEET

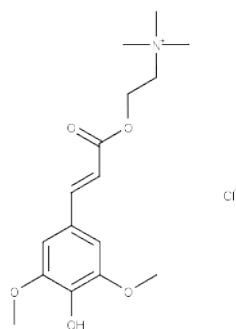


www.extrasynthese.com

## Sinapine chloride

**REF 4770 S**

<u>Chemical family</u>	PHENYLPROPANOID / Cinnamic acid deriv.
<u>Synonym</u>	Sinapic acid choline ester chloride
<u>CAS Number</u>	6484-80-6
<u>Empirical formula</u>	C <sub>16</sub> H <sub>24</sub> NO <sub>5</sub> Cl
<u>Molecular weight</u>	345,82
<u>Observation</u>	Sinapine: CAS RN: 18696-26-9



## Classification



Skin Irritation (Category 2) (H315) ; Eye Irritation (Category 2) (H319) ; Specific Target Organ Toxicity - Single Exposure (Category 3) (H335)

## Long term storage

Store at <-15°C

Store in dry and dark place.

## Shipment conditions

Ambient temperature

## Appearance

White to beige coloured Powder

## Purity (HPLC)

≥98%

This product is available with HPLC chromatogram