

# DATASHEET

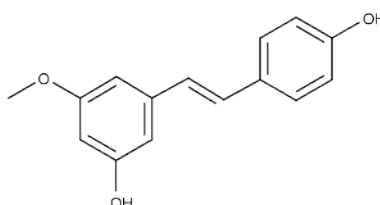


www.extrasynthese.com

## Pinostilbene

**REF 4970 S**

<u>Chemical family</u>	PHENYLPROPANOID / Stilbene
<u>Synonym</u>	Resveratrol-3-methylether
<u>CAS Number</u>	42438-89-1
<u>Empirical formula</u>	C <sub>15</sub> H <sub>14</sub> O <sub>3</sub>
<u>Molecular weight</u>	242,28



## Classification



Skin Irritation (Category 2) (H315) ; Serious Eye Damage (Category 1) (H318) ; Specific Target Organ Toxicity - Single Exposure (Category 3) (H335)

## Long term storage

Store at <+8°C

Store in dry and dark place.

## Shipment conditions

Ambient temperature

## Appearance

White to beige coloured Powder

## Purity (HPLC)

≥98%

This product is available with HPLC chromatogram