

# DATASHEET

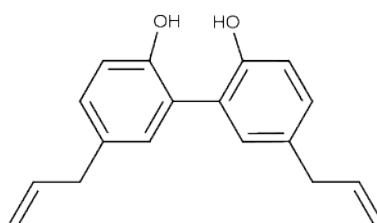


www.extrasynthese.com

Magnolol

**REF 4998 S**

<u>Chemical family</u>	POLYPHENOL / Biphenyl
<u>CAS Number</u>	528-43-8
<u>Empirical formula</u>	C <sub>18</sub> H <sub>18</sub> O <sub>2</sub>
<u>Molecular weight</u>	266,34



Classification



Hazardous to the aquatic environment (Category 2) (H411) ; Skin Irritation (Category 2) (H315) ; Serious Eye Damage (Category 1) (H318) ; Specific Target Organ Toxicity - Single Exposure (Category 3) (H335)

Long term storage

Store at <+8°C

Store in dry and dark place.

Shipment conditions

Ambient temperature

Appearance

White to beige coloured Powder

Purity (HPLC)

≥99%

This product is available with HPLC chromatogram