

# DATASHEET



www.extrasynthese.com

## Sabinyl acetate

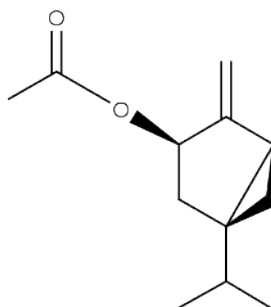
**REF 5011**

Chemical family MONOTERPENE

CAS Number 3536-54-7

Empirical formula C<sub>12</sub>H<sub>18</sub>O<sub>2</sub>

Molecular weight 194,28



Long term storage

Store at <+8°C

Store in dry and dark place.

Shipment conditions

Ambient temperature

Appearance

Liquid

[α]<sub>D</sub> +(77 ± 5)<sup>o</sup> c=2 in ethanol

Purity (GC) ≥90%