

# DATASHEET

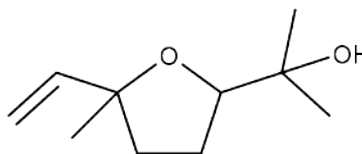


www.extrasynthese.com

## Linalool oxide

**REF 5040 S**

<u>Chemical family</u>	MONOTERPENE
<u>Synonym</u>	Linalyl oxide
<u>CAS Number</u>	60047-17-8
<u>Empirical formula</u>	C <sub>10</sub> H <sub>18</sub> O <sub>2</sub>
<u>Molecular weight</u>	170,25
<u>Observation</u>	mixture of isomers (cis+trans)



## Classification



Acute oral toxicity (Category 4) (H302) ; Skin Corrosion (Category 1B) (H314) ; Eye Irritation (Category 2) (H319)

## Long term storage

Store at <+8°C

Store in dry and dark place.

## Shipment conditions

Ambient temperature

## Appearance

Liquid

## Purity (GC)

≥97%

This product is available with GC chromatogram