

DATASHEET

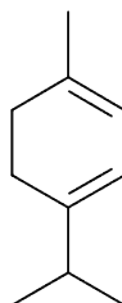


www.extrasynthese.com

alpha-Terpinene

REF 5064 S

<u>Chemical family</u>	MONOTERPENE
<u>CAS Number</u>	99-86-5
<u>Empirical formula</u>	C ₁₀ H ₁₆
<u>Molecular weight</u>	136,24



Classification



Acute oral toxicity (Category 4) (H302) ; Flammable Liquids (Category 3) (H226) ; Hazardous to the aquatic environment (Category 2) (H411) ; Skin Irritation (Category 2) (H315) ; Eye Irritation (Category 2) (H319) ; Specific Target Organ Toxicity - Single Exposure (Category 3) (H335)

Long term storage

Store at <-15°C

Store in dry and dark place.

Shipment conditions

Ambient temperature

Appearance

Liquid

Purity (GC)

≥95%

This product is available with GC chromatogram