

# DATASHEET



www.extrasynthese.com

## Terpinolene

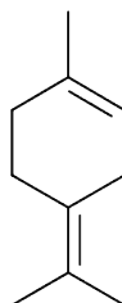
**REF 5067 S**

Chemical family MONOTERPENE

CAS Number 586-62-9

Empirical formula C<sub>10</sub>H<sub>16</sub>

Molecular weight 136,24



Classification



Hazardous to the aquatic environment (Category 1) (H400) ; Hazardous to the aquatic environment (Category 1) (H410)

Long term storage

Store at <+8°C

Store in dry and dark place.

Shipment conditions

Ambient temperature

Appearance

Liquid

Purity (GC)

≥95%

This product is available with GC chromatogram