

DATASHEET

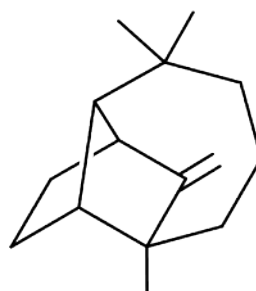


www.extrasynthese.com

(+)-Longifolene

REF 5395 S

<u>Chemical family</u>	SESQUITERPENE
<u>CAS Number</u>	475-20-7
<u>Empirical formula</u>	C ₁₅ H ₂₄
<u>Molecular weight</u>	204,36



<u>Long term storage</u>	Store at <+8°C Store in dry and dark place.
<u>Shipment conditions</u>	Ambient temperature

<u>Appearance</u>	Liquid
<u>[α]_D</u>	+(45±3) ^o in substance
<u>Purity (GC)</u>	≥95%
This product is available with GC chromatogram	